

WEAVER®

Safety Lane

Electric Eye Headlight Tester Manual

Model Year 1937

DISCONTINUED No Parts Are Available

Section One – Operating Instructions

Section Two – Manual of Headlight Service

Section Three – Headlight Service and How to Sell It

Visit www.castleequipment.com and view the Weaver History Page for additional details

Presented as courtesy by:

Castle EQUIPMENT
COMPANY
SINCE 1950

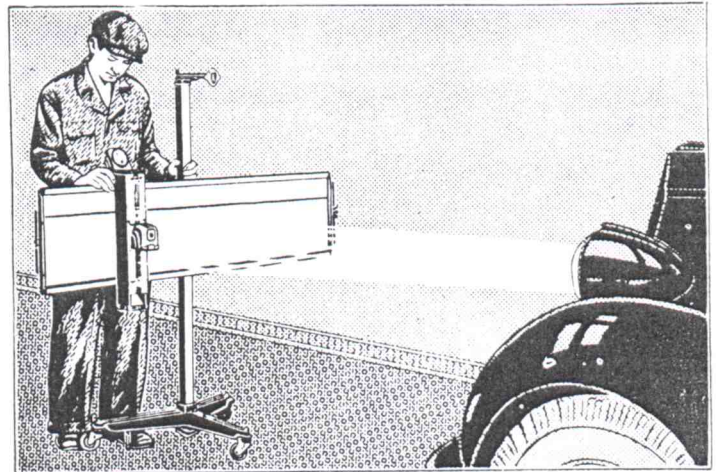
**TOLL-FREE: 888-274-8490
TELEPHONE: 815-458-6216
FAX: 815-458-9350
E-MAIL: CASTLE@AMERITECH.NET
WEBSITE: WWW.CASTLEEQUIPMENT.COM
P.O. Box 3; BRAIDWOOD, IL 60408**

OPERATING INSTRUCTIONS

for Using

Weaver Electric Eye Headlight Tester

IMPORTANT —
ESTABLISH A
**HEADLIGHT SERVICE
DEPARTMENT**
IN YOUR SHOP
WHERE ALL TESTS CAN BE MADE
WITH ASSURED ACCURACY



Headlight adjustment is one of the most exacting services from a standpoint of accuracy. Variation of just one degree from proper aim means deflection of the beam 3 1/2 feet out of line at a distance of 200 feet — enough perhaps to throw the "hot spot" off the road and seriously reduce the distance of effective illumination and vision.

Under such circumstances it is obvious that your Weaver Electric Eye Headlight Tester, or any other device, should not be used "just anywhere" on the garage floor. Precautions should be taken to see that the Tester stands on a PERFECTLY flat place, and that both car and Tester are in the same plane — preferably level. The Testers are calibrated at the factory for a perfectly level floor, and before attempting to service headlights, test the floor where Tester is to be used as to its suitability for headlight work. First make sure that the spot where the Tester is to stand is quite smooth — enough so that the Tester wheels may move wherever necessary without meeting bumps or hollows that will tilt the screen. Then place the Tester in this smooth area, and drive a car to suitable working distance. Adjust the Tester screen up or down until both images on the ground glass are squarely centered on the horizontal cross hair with white image squarely centered on vertical cross hair, as in Fig. 1. Measure carefully the height of headlight center above floor and out

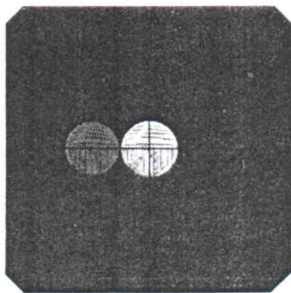


FIG. 1

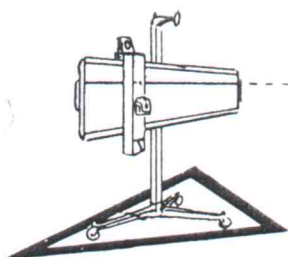
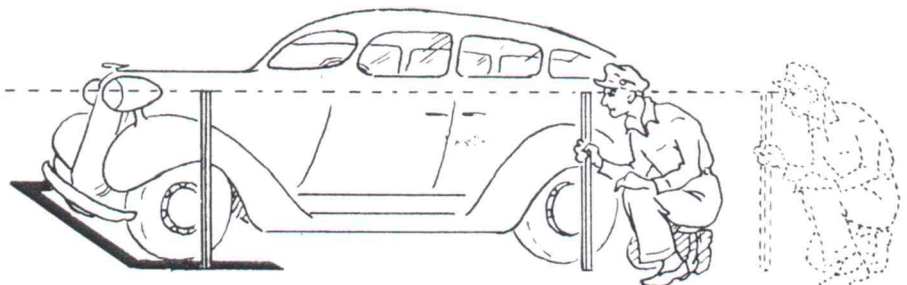


FIG. 2



two sticks to this exact length. Place beside front and rear wheels (as in Fig. 2) and sight along their tops. They should line up exactly with the black line on the screen panel. If not in line, move Tester screen up or down until the black line lines up with sticks, and adjust screws at back of screen so that the image comes on cross hair. (See Fig. 3).

Having found a suitable location for headlight service, we earnestly recommend that you mark it by painting lines on the floor, using the dimensions shown in Fig. 4. Note

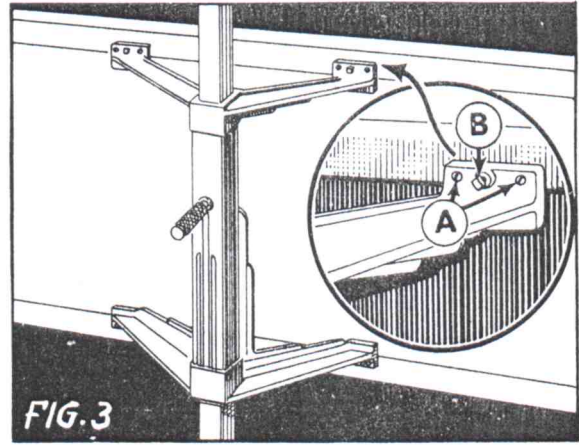


FIG. 3

that the inner edge of the car guide line should indicate the correct location of the headlight lenses — cars to be tested should be stopped with lenses directly over the near edge of the line. Such markings not only serve to keep your headlight testing accurate, but will departmentalize and dress up your headlight service.

Most shops find it a real help to use a portable cabinet with drawers for their headlight work. It will be found convenient to hold tools, cotton, metal polish, bulbs and other parts. Those who really "do a job" of headlight service will mount a voltmeter in their cabinet, and be prepared to test the actual voltage delivered to the headlights. Weaver does not make such a cabinet — we merely recommend it as a great convenience.

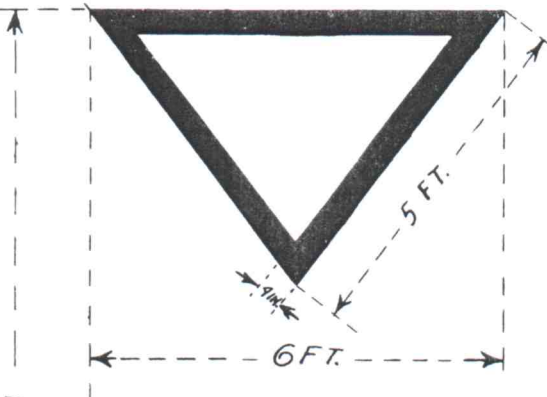


FIG. 4

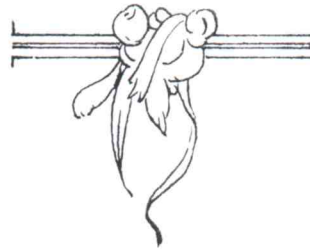
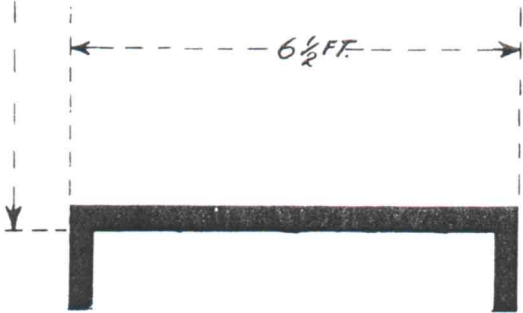


FIG. 5

Diagrammatic cross section showing how the Optoscope works

